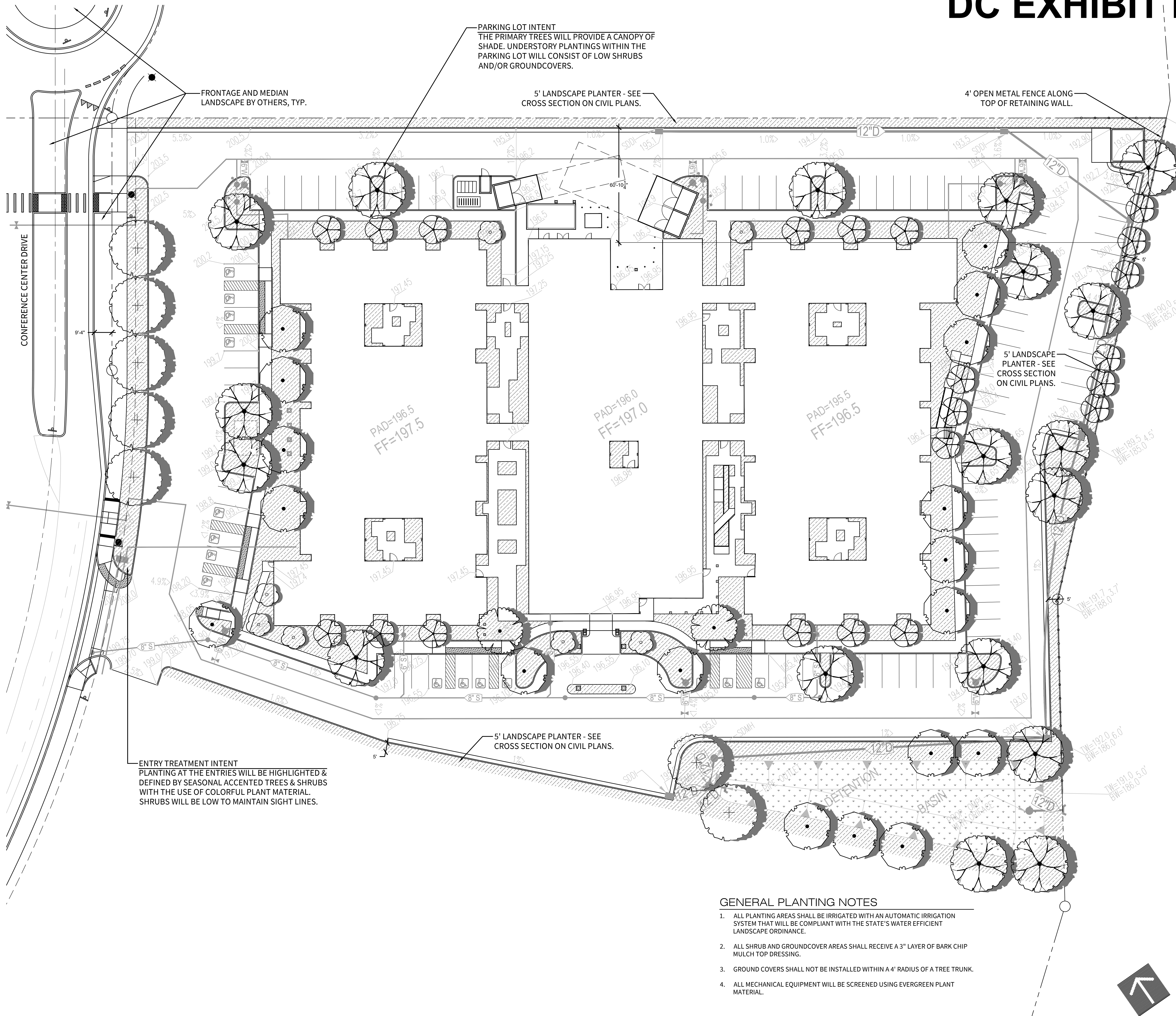


DC EXHIBIT I



TREE SCHEDULE

TREES	BOTANICAL / COMMON NAME	SIZE	WATER USE	QTY
	ACER RUBRUM 'BOWHALL' / BOWHALL RED MAPLE	15 GAL.	MOD	19
	GINKGO BILOBA 'AUTUMN GOLD' TM / AUTUMN GOLD MAIDENHAIR TREE	24" BOX	MOD	2
	LAGERSTROEMIA INDICA X FAURIEI 'NATCHEZ' / NATCHEZ CRAPE MYRTLE	24" BOX	LOW	7
	PISTACIA CHINENSIS 'KEITH DAVEY' / KEITH DAVEY CHINESE PISTACHE	15 GAL.	LOW	7
	TILIA CORDATA 'GREENSPIRE' / GREENSPIRE LITTLELEAF LINDEN	15 GAL.	MOD	18
	ULMUS PROPIQUA 'JFS-BIEBERICH' TM / EMERALD SUNSHINE ELM	15 GAL.	MOD	18

CONCEPT PLANT SCHEDULE

	FOUNDATION/SCREENING SHRUBS EUONYMUS JAPONICUS 'GREEN SPIRE' / GREEN SPIRE EUONYMUS JUNIPERUS VIRGINIANA 'SKYROCKET' / SKYROCKET JUNIPER LEPTOSPERMUM SCOPARIUM 'RUBY GLOW' / RED NEW ZEALAND TEA TREE LIGUSTRUM SINESIS 'SUNSHINE' / SUNSHINE LIGUSTRUM PRINUS CAROLINIANA 'COMPACTA' / COMPACT CAROLINA LAUREL CHERRY RHAMNUS CALIFORNICA 'EVE CASE' / CALIFORNIA COFFEEBERRY	5 GAL., LOW 5 GAL., LOW 5 GAL., LOW 5 GAL., LOW 5 GAL., LOW 5 GAL., LOW
	FILLER ARCTOSTAPHYLOS DENSIFLORA 'HOWARD MCMINN' / HOWARD MCMINN MANZANITA CALLISTEMON VIMINALIS 'LITTLE JOHN' / DWARF WEEPING BOTTLEBRUSH CORREA X 'IVORY BELLS' / IVORY BELLS AUSTRALIAN FUCHSIA DIANELLA TASMANICA 'VAREGATA' / VAREGATED FLAX LILY EUONYMUS JAPONICUS 'MICROPHYLLA VARIETA' / VAREGATED BOXLEAF EUONYMUS GREVILLEA X 'NOELLII' / GREVILLEA MYRTUS COMMUNIS 'COMPACTA' / DWARF MYRTLE OLEA EUROPAEA 'LITTLE OLLIE' TM / LITTLE OLLIE OLIVE RHAPHIOLEPS UMBELLATA 'MINOR' / YEDDA HAWTHORN WESTRINGIA FRUTICOSA 'WYNABBIE GEM' / WYNABBIE GEM COAST ROSEMARY	5 GAL., LOW 5 GAL., LOW 5 GAL., LOW 1 GAL., LOW 2 GAL., LOW 1 GAL., LOW 5 GAL., LOW 5 GAL., LOW 5 GAL., LOW 5 GAL., LOW
	ACCENT SHRUBS/GRASSES ACACIA COGNATA 'ACCORGI' / COUSIN ITT LITTLE RIVER WATTLE CHONDROPETALUM TECTORUM / CAPE RUSH GAURA LINDHEIMERI 'WHIRLING BUTTERFLIES' / WHIRLING BUTTERFLIES GAURA LOMANDRA LONGIFOLIA 'BREEZE' / BREEZE MAT RUSH MUHLENBERGIA CAPILLARIS 'PINK MUHLY' ROSA X 'RED' / RED CARPET ROSE SALVIA GREGGII 'HOT LIPS' / AUTUMN SAGE SALVIA LEUCANTHA 'MIDNIGHT' / MEXICAN BUSH SAGE YUCCA GLORIOSA RECURVIFOLIA 'WALBRISTAR' / BRIGHT STAR YUCCA	5 GAL., LOW 1 GAL., LOW 1 GAL., LOW 1 GAL., LOW 1 GAL., LOW 2 GAL., MOD 1 GAL., LOW 1 GAL., LOW 2 GAL., LOW
	GROUNDCOVERS COPROSMA KIRKII 'VERDE VISTA' / VERDE VISTA CREEPING MIRROR PLANT DIANELLA REVOLUTA 'LITTLE REV' / LITTLE REV FLAX LILY DYMONDIA MARGARETAE 'SILVER CARPET' / DYMONDIA MAHONIA REPENS / CREEPING MAHONIA ROSMARINUS OFFICINALIS 'PROSTRATUS' / DWARF TRAILING ROSEMARY TEUCRIUM CHAMAEDRY'S 'PROSTRATUS' / PROSTRATE GERMANDER TRACHELOSPERMUM JASMINOIDES / CHINESE STAR JASMINE	1 GAL., LOW 1 GAL., LOW 1 GAL., LOW 1 GAL., LOW 1 GAL., LOW 1 GAL., LOW 1 GAL., MOD
	STORMWATER SWALE CHONDROPETALUM TECTORUM 'DWARF' / DWARF CAPE RUSH JUNCUS PATENS 'ELK BLUE' / SPREADING RUSH LEYMUS CONDENSATUS 'CANYON PRINCE' / CANYON PRINCE GIANT WILD RYE MUHLENBERGIA RIGENS / DEER GRASS SISYRINCHIUM BELLUM / BLUE-EYED GRASS TURF SOD BIOFILTRATION SOD / DELTA BLUEGRASS BIOFILTRATION SOD	1 GAL., L 1 GAL., L 1 GAL., L 1 GAL., L 1 GAL., L SOD, M

TOTAL LANDSCAPE AREA: 42,487 S.F.

SHADE CALCULATIONS

TOTAL PAVED AREA = 29,160 S.F.
TOTAL SHADE REQUIRED (50%) = 14,580 S.F.
TOTAL SHADE PROVIDED (50%) = 14,839 S.F.

DIA.	QTY.	S.F.	TOTAL S.F.
35' TREES (ULMUS)			
100%	9	962	8,658
75%	0	722	0
50%	4	481	1,924
25%	1	240	240
25' TREES (GINKGO, TILIA)			
100%	0	491	0
75%	0	369	0
50%	12	246	2,952
25%	1	123	123
20' TREES (ACER)			
100%	0	314	0
75%	0	236	0
50%	6	157	942
25%	0	79	0
TOTAL SHADE PROVIDED:			14,839 S.F.

GENERAL PLANTING NOTES

- ALL PLANTING AREAS SHALL BE IRRIGATED WITH AN AUTOMATIC IRRIGATION SYSTEM THAT WILL BE COMPLIANT WITH THE STATE'S WATER EFFICIENT LANDSCAPE ORDINANCE.
- ALL SHRUB AND GROUNDCOVER AREAS SHALL RECEIVE A 3" LAYER OF BARK CHIP MULCH TOP DRESSING.
- GROUND COVERS SHALL NOT BE INSTALLED WITHIN A 4' RADIUS OF A TREE TRUNK.
- ALL MECHANICAL EQUIPMENT WILL BE SCREENED USING EVERGREEN PLANT MATERIAL.

